

Project Case Studies –

1. Utility Mapping & Management solution to J.W. Marriott

Utility Mapping & Management solution to J.W. Marriott



Project for -

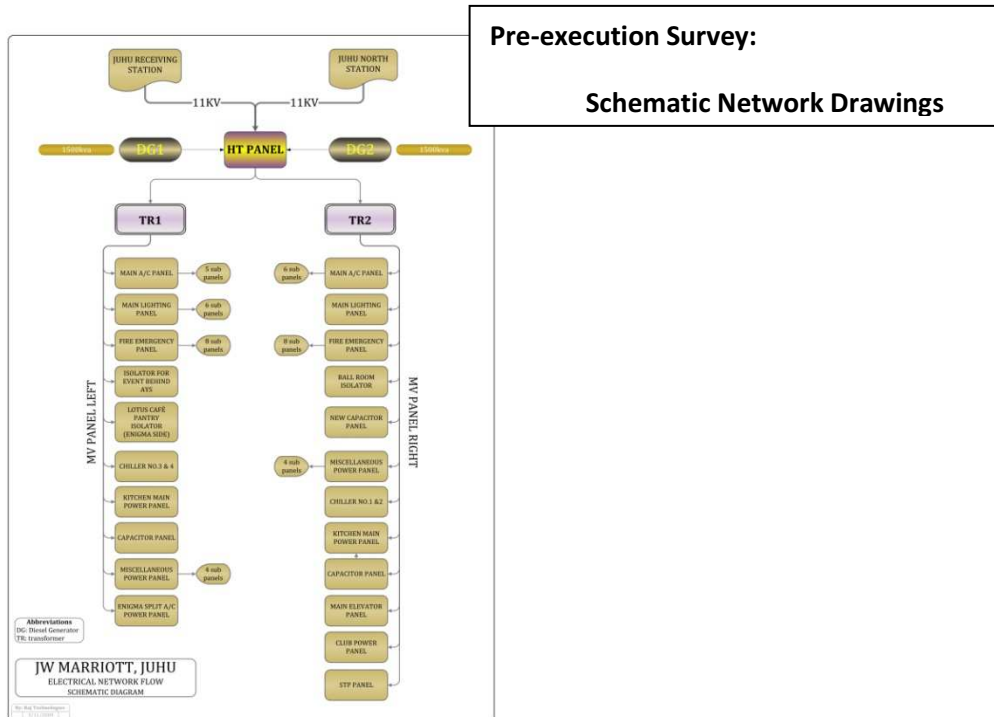
Marriott International, Inc. is a leading lodging company. Its heritage can be traced to a root beer stand opened in Washington, D.C. in 1927 by J. Willard and Alice S. Marriott. Today, Marriott International has more than 3,200 lodging properties located in the United States and 66 other countries and territories. In India, several brands of Marriott Lodging are operating successfully & owe prestige in the Hospitality industry.

Nature of the Project -

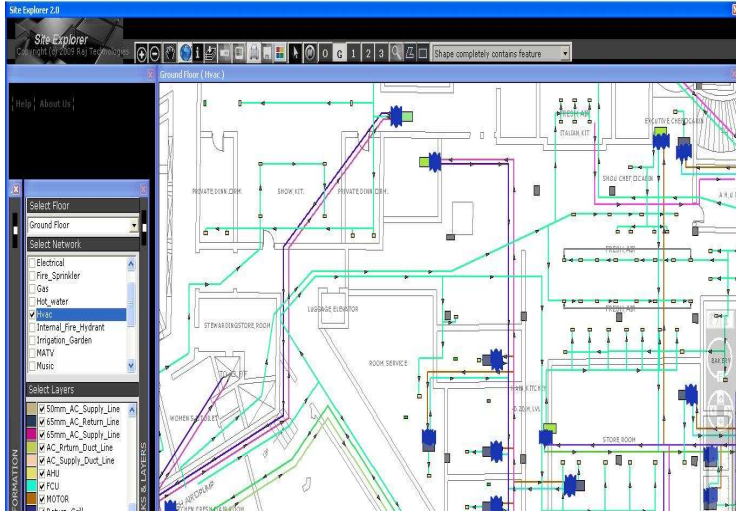
SpanDigit has successfully provided solutions for utility data management, Utility surveying, mapping & software application development to J.W Marriott Mumbai & Marriott Hotels & Resorts, Goa.

In the hospitality industry, major area of concern is customer satisfaction which is accomplished by providing excellent services to guests. Service quality to guests ultimately depends upon operational efficiency. It becomes crucial to keep all network functions running efficiently & for this a well organized, precise, and easily accessible documentation of network data is essential.

Methodology -



Property, to which solution has been catered, had different utility supply lines like water mains, sewage systems, telephone lines, power lines, gas mains, HVAC etc. These utility supply lines were captured in digital format & software application was developed to easily explore warehoused data. Utility surveying, Mapping, creating drawings, & developing tool which helps to retrieve the information and answer queries, was a service given for both properties. It started from property or building survey and ended into delivery of software which systematically warehouses utility data, understands network and mimics virtually the whole flow and location of the utilities.



SpanDigit's efforts have benefitted in a manner that consolidated utility drawings with base plan in a single digital document. Base plan was accurately revised & verified as per site survey. Software provided became useful tool for navigation, detail layer information, network analysis along with features like pan, zoom, search, query, and print supported software operation. In a nutshell, this organization benefitted greatly from this digital information of utility & component; evaluated on actual survey basis, and warehoused with systematic software application.